



**HITZE**  
NATURAL HEATING

FIREPLACES  
STOVES  
ACCESSORIES

[www.hitze.company](http://www.hitze.company)



# A G E N D A

## **ABOUT**

Company history, activity and values of HITZE

## **PARTNERS**

List of cooperators

## **OFFER**

Hitze brand-description, principle of operation, connecting schemes, HAD System

## **SUMMARY**

Conclusions, issues, questions



## A B O U T

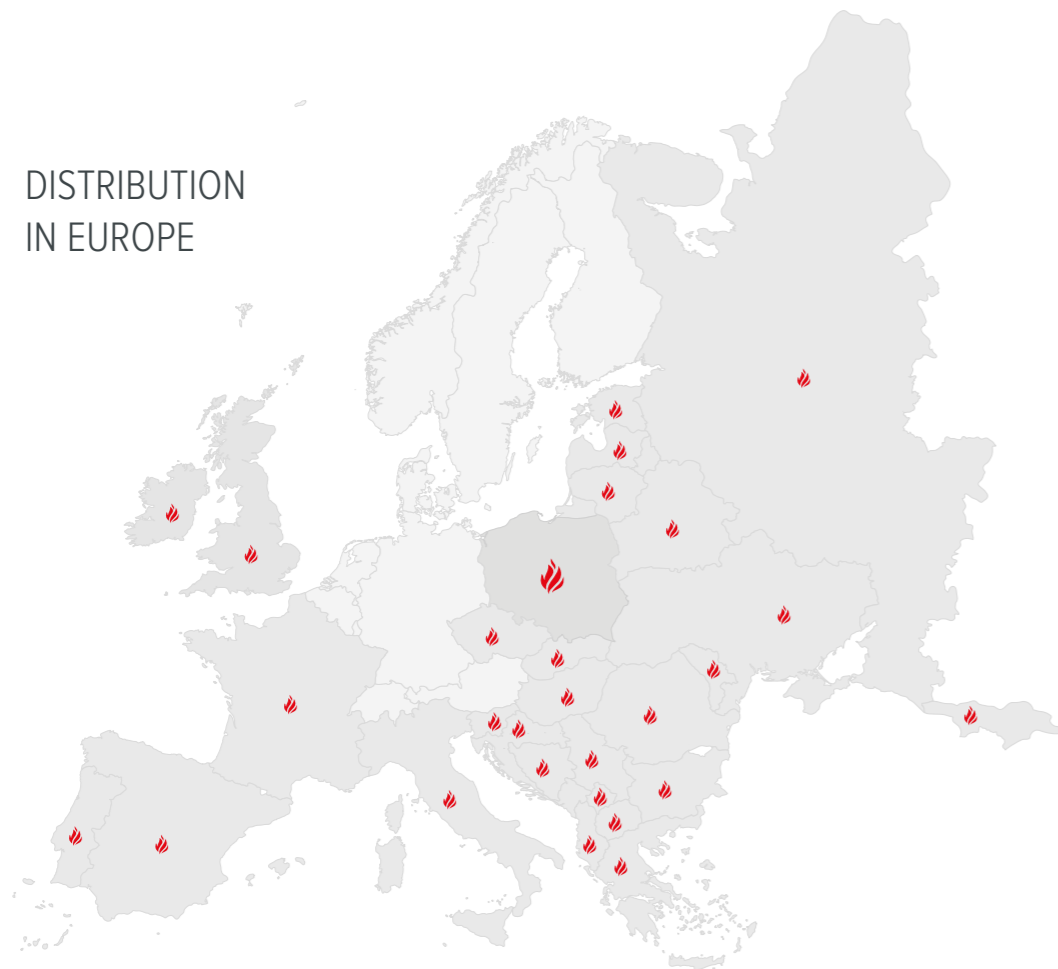
We are a leading Polish manufacturer of fireplaces, pellet stoves and fireplace accessories. On the Polish and foreign markets we supply products of the highest quality, made by using the latest technology. Our products are characterized by a unique design that complements any stylish home and business interior.

NATURAL HEATING - these words reflect perfectly the philosophy of Hitze brand.

Concerned about the nature we pay a great importance to ecological solutions and technology. In keeping with our philosophy we produce fireplaces and stoves that use wood as fuel or wood pellets, raw materials or the least harmful to the environment.

Thanks to modern technology and many years of experience, we have created innovative solutions that are not only in care about the natural environment, but also high efficiency heating. The dynamic development of the company and cooperation with the best partners, allow us to permanently enlarging the product range and maintain a stable position on the market.

DISTRIBUTION  
IN EUROPE





## PARTNERS

High quality heating products need a cooperation with the best market partners:



Leading unit-glass producer, specialized in flat glass processing, strictly cooperating with world biggest glass manufacturers- Pilkington Concern. Best quality of the manufactured glasses has been confirmed by the certificates of: ISiC-Q, license sign „Glass Max”.



We are strictly cooperating and deriving from an experience of family business Stalko, which is producing machines and devices made of highest carbon stainless steel.



A leader among Hot Air Distribution Systems and accessories for fireplaces. Their wide range of products and rigid safety norms compliance is for us an expression of high care about the customer's satisfaction.



ThyssenKrupp Energostal SA is the main distributor of metallurgical materials and plastics in Poland. They offer a wide range of wares made of carbon steel, stainless steel, non-iron metals and plastics.



A Polish manufacturer of chimney systems, hot air distribution systems, ventilation systems and thermo isolation solutions.

FIREPLACE  
INSERTS



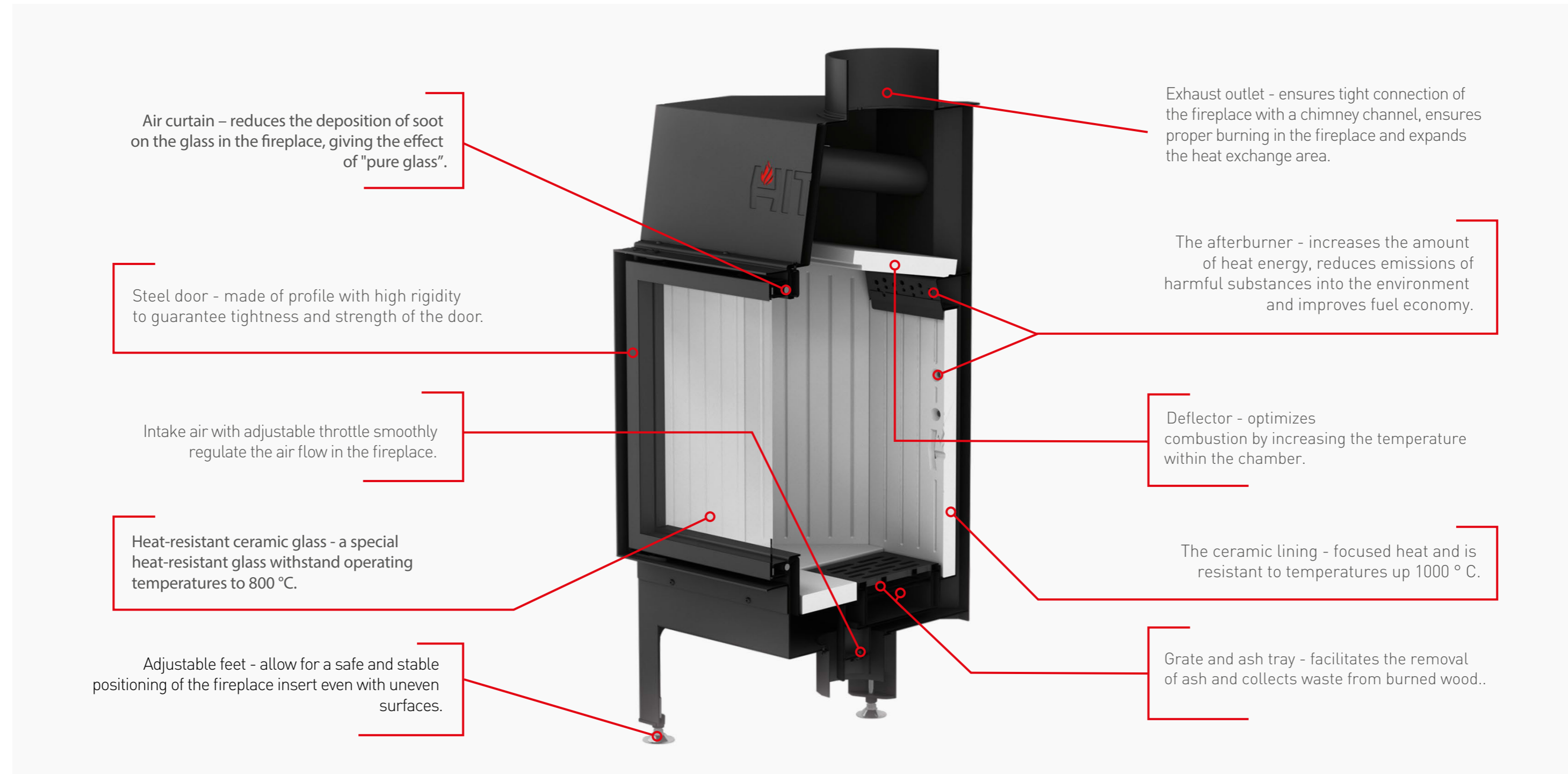
CONVECTION



.01

# CONVECTION FIREPLACE ADVANTAGES

## ALBERO



# FIREPLACE INSERTS

## HEATING CAPACITY 9 kW



- AL9 **S.H** Standard horizontal fireplace insert
- AL9 **S.V** Standard vertical fireplace insert
- AL9 **G.V** Guillotine vertical fireplace insert
- AL9 **G.H** Guillotine horizontal fireplace insert

- AL9 **R.H** Right horizontal fireplace insert
- AL9 **L.H** Left horizontal fireplace insert
- AL9 **RG.H** Right guillotine horizontal fireplace insert
- AL9 **LG.H** Left guillotine horizontal fireplace insert

### ALBERO LINE 9 kW EQUIPMENT

- 🔥 Fireplace coating-black
- 🔥 Handle color- INOX
- 🔥 Ceramic lining combustion chamber
- 🔥 Ceramic deflector
- 🔥 Integrated exhaust throttle
- 🔥 Exhaust outlet
- 🔥 Ash pan container
- 🔥 40 mm adjustable feet



# FIREPLACE INSERT

## HEAT CAPACITY 11 kW



- AL11 **S.H** Standard horizontal fireplace insert
- AL11 **S.V** Standard vertical fireplace insert
- AL11 **G.V** Guillotine vertical fireplace insert
- AL11 **G.H** Guillotine horizontal fireplace insert

- AL11 **R.H** Right horizontal fireplace insert
- AL11 **L.H** Left horizontal fireplace insert
- AL11 **RG.H** Right guillotine horizontal fireplace insert
- AL11 **LG.H** Left guillotine horizontal fireplace insert

### ALBERO LINE 11 kW EQUIPMENT

### SERII 11

- 🔥 Fireplace coating-black
- 🔥 Handle color INOX
- 🔥 Ceramic lining combustion chamber
- 🔥 Ceramic deflector

- 🔥 Integrated exhaust throttle
- 🔥 Exhaust outlet
- 🔥 Ash pan container
- 🔥 40 mm adjustable feet





# FIREPLACE INSERT

## HEAT CAPACITY 14 kW



AL14 **S.H** Standard horizontal fireplace insert

AL14 **S.V** Standard vertical fireplace insert

AL14 **G.H** Guillotine horizontal fireplace insert

AL14 **R.H** Right horizontal fireplace insert

AL14 **L.H** Left horizontal fireplace insert

AL14 **RG.H** Right guillotine horizontal fireplace insert

AL14 **LG.H** Left guillotine horizontal fireplace insert

### ALBERO LINE 14 kW EQUIPMENT

- 🔥 Fireplace coating- black
- 🔥 Handle color INOX
- 🔥 Ceramic lining combustion chamber
- 🔥 Ceramic deflector  
\*Double deflector
- 🔥 Integrated exhaust throttle
- 🔥 Exhaust outlet
- 🔥 Ash pan container
- 🔥 40 mm Adjustable feet



# FIREPLACE INSERT

## HEAT CAPACITY 16 kW



AL16 **S.H** Standard horizontal fireplace insert

AL16 **G.H** Guillotine horizontal fireplace insert

AL16 **R.H** Right horizontal fireplace insert

AL16 **L.H** Left horizontal fireplace insert

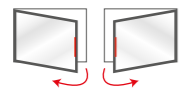
AL16 **RG.H** Right guillotine horizontal fireplace insert

AL16 **LG.H** Left guillotine horizontal fireplace insert

### ALBERO LINE 16 kW EQUIPMENT

- 🔥 Fireplace coating- black
- 🔥 Handle color INOX
- 🔥 Ceramic lining combustion chamber
- 🔥 Double ceramic deflector
- 🔥 Integrated exhaust throttle
- 🔥 Exhaust outlet
- 🔥 Ash pan container
- 🔥 40 mm adjustable feet

Possibility of changing the door opening direction



ALBERO  
AL16 S.H



ALBERO  
AL16 G.H



ALBERO  
AL16 R.H



ALBERO  
AL16 L.H



ALBERO  
AL16 RG.H



ALBERO  
AL16 LG.H

# FIREPLACE INSERT

## HEAT CAPACITY 19 kW



AL19 **S.H** Standard horizontal fireplace insert

AL19 **G.H** Guillotine horizontal fireplace insert

AL19 **R.H** Right horizontal fireplace insert

AL19 **L.H** Left horizontal fireplace insert

AL19 **RG.H** Right guillotine horizontal fireplace insert

AL19 **LG.H** Left guillotine horizontal fireplace insert

### ALBERO LINE 19 kW EQUIPMENT

🔥 Fireplace coating-black

🔥 Handle color INOX

🔥 Ceramic lining combustion chamber

🔥 Ceramic deflector

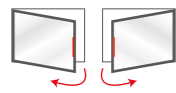
🔥 Integrated exhaust throttle

🔥 Exhaust outlet

🔥 Ash pan container

🔥 40 mm adjustable feet

Possibility of changing the door opening direction



220 mm



150 mm

ALBERO  
AL19 S.H

220 mm



150 mm

ALBERO  
AL19 G.H

220 mm



150 mm

ALBERO  
AL19 R.H

220 mm



150 mm

ALBERO  
AL19 L.H

220 mm



150 mm

ALBERO  
AL19 RG.H

220 mm



150 mm

ALBERO  
AL19 LG.H

# FIREPLACE INSERT HEAT CAPACITY 25 kW



## ALBERO LINE 25 kW EQUIPMENT

- ❖ Fireplace coating- black
- ❖ Handle color INOX
- ❖ Ceramic lining combustion chamber
- ❖ Ceramic deflector
- ❖ Double throttle
- ❖ Exhaust outlet
- ❖ 40 mm adjustable feet
- ❖ Grate free fireplace

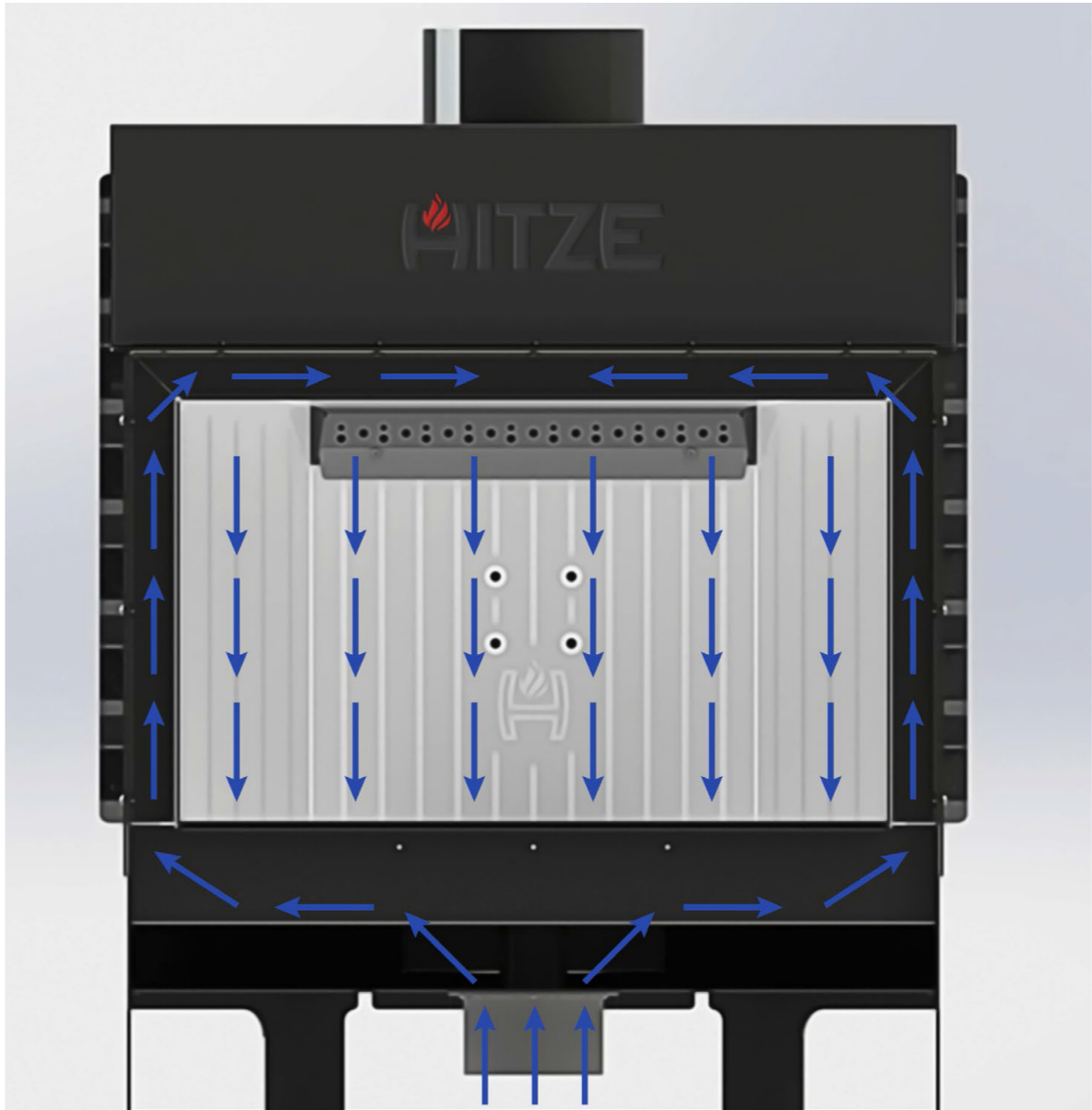
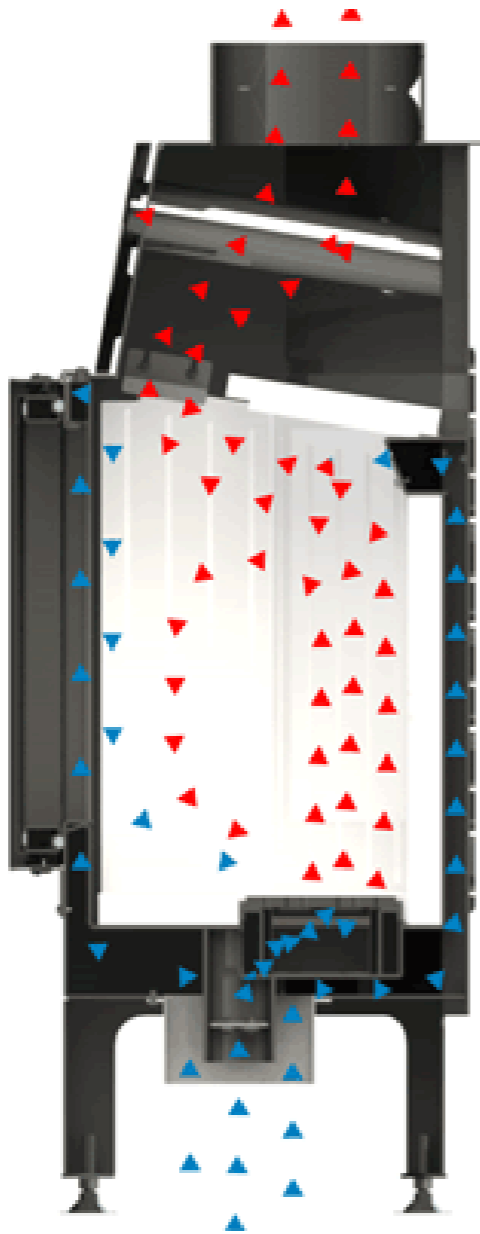


ALBERO  
AL120x43 G.H

Convection fireplace from line ALBERO-120x43 G.H has a heating output of 25 kW, and is now the most-powerful fireplace produced by Hitze. It is a grate free insert. Unlike other fireplaces from Albero line, produced from steel of a thickness of 3 mm, model AL 120x43 is made from thicker- 4-mm steel grade P265GH according to EN 10028-2.



# AIR CIRCULATION FIREPLACE INSERT



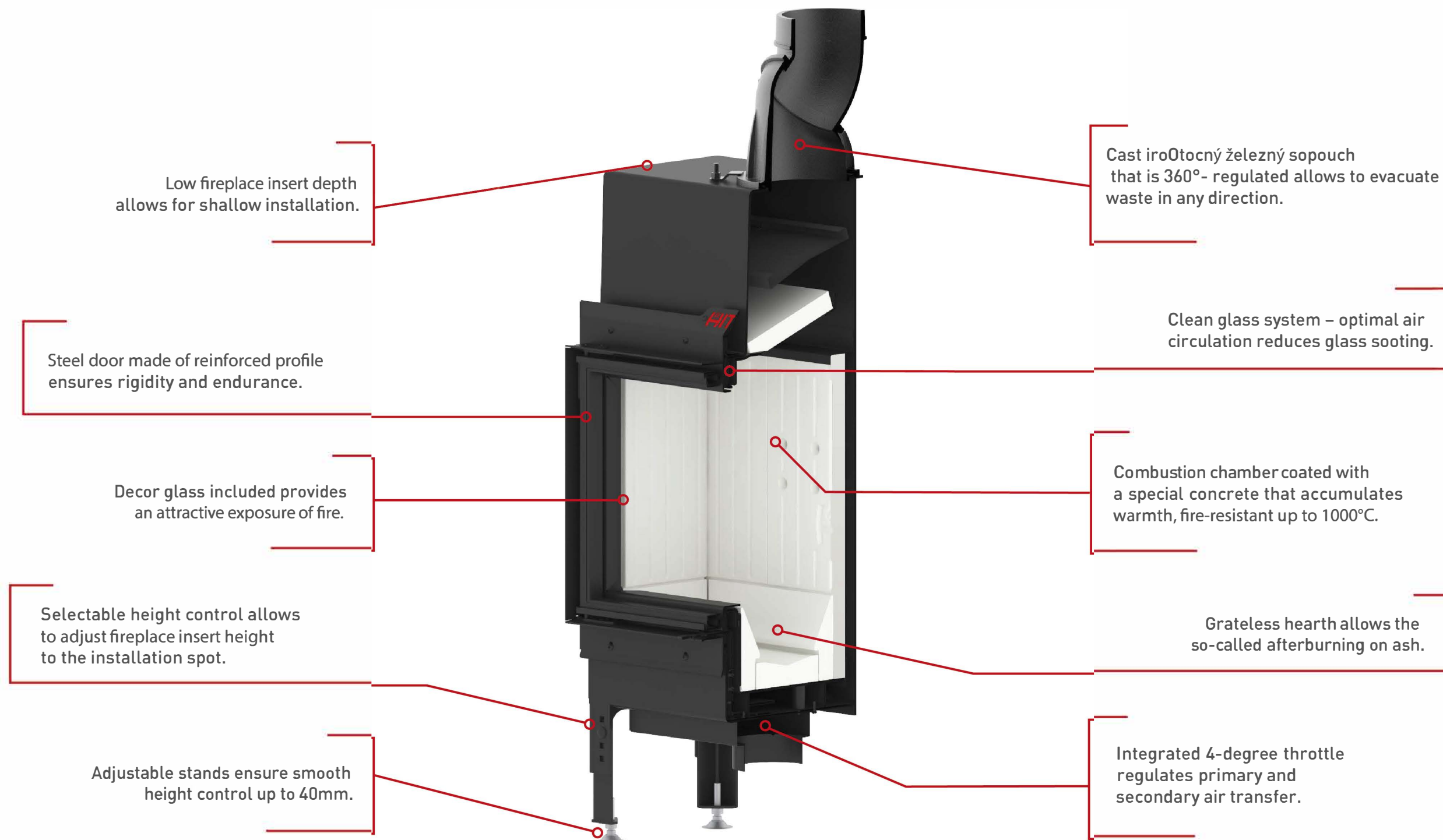
FIREPLACE  
INSERTS

HST

CONVECTION



# CONVECTION FIREPLACE ADVANTAGES LINE HST



# FIREPLACE CONVECTION LINE HST



HST **54x39 S** standard horizontal fireplace insert with output of 5.9kW

HST **59x43 S** standard horizontal fireplace insert with output of 7.6kW

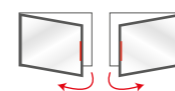
HST **68x43 S** standard horizontal fireplace insert with output of 9.3 kW

## LINE HST FIREPLACE INSERT INVENTORY

- 🔥 Fireplace front cover – black
- 🔥 Ceramic insert
- 🔥 Integrated 4-degree throttle
- 🔥 Regulated cast iron flue
- 🔥 Decor glass
- 🔥 Double height adjustment



Possibility of changing the door opening direction



160mm

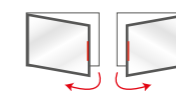


125 mm

HST **54x39.S**



Possibility of changing the door opening direction



160mm

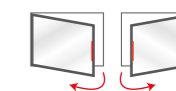


125 mm

HST **59x43.S**



Possibility of changing the door opening direction



160mm



125 mm

HST **68x43.S**





AIR CIRCULATION  
**FIREPLACE INSERT**  
**HST**

---



FIREPLACE  
INSERTS

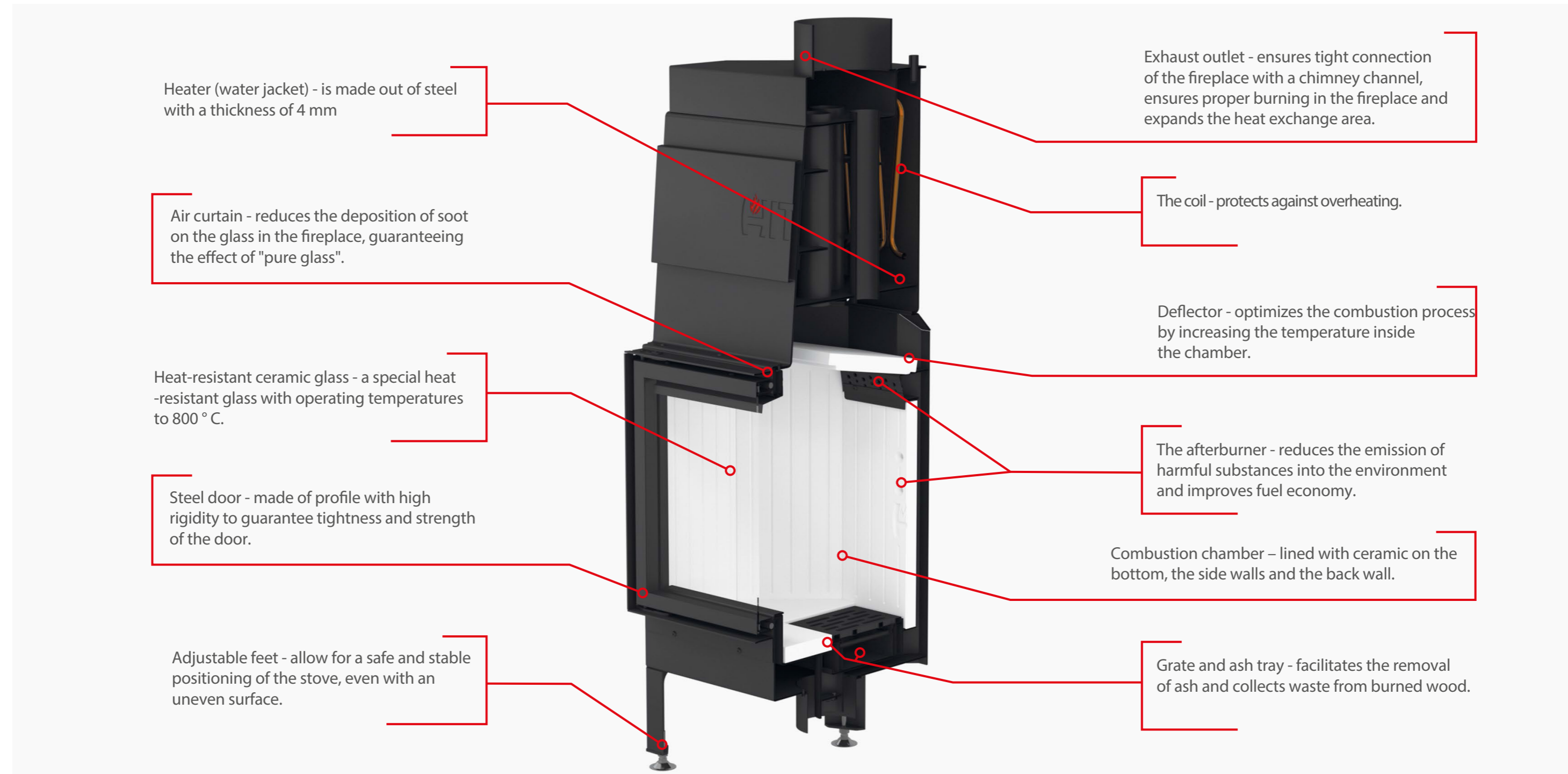


WITH WATER  
JACKET



.03

# ADVANTAGES WATER JACKET INSERTS



# FIREPLACE INSERTS

## WITH WATER JACKET ALBERO AQUASYSTEM



ALAQ **54x39.S** Standard horizontal fireplace insert

ALAQ **54x39.G** Guillotine horizontal fireplace insert

ALAQ **59x43.S** Standard horizontal fireplace insert

ALAQ **59x43.G** Guillotine horizontal fireplace insert

ALAQ **68x43.S** Standard horizontal fireplace insert

ALAQ **68x43.G** Guillotine horizontal fireplace insert

ALAQ **68x53.S** Standard horizontal fireplace insert

ALAQ **68x53.G** Guillotine horizontal fireplace insert

ALAQ **90x41.S** Standard horizontal fireplace insert

ALAQ **90x41.G** Guillotine horizontal fireplace insert

### EQUIPMENT FROM **AQUASYSTEM LINE**

- 🔥 Fireplace coating-black
- 🔥 Handle color INOX
- 🔥 Ceramic lining
- 🔥 Ceramic deflector

- 🔥 Integrated exhaust throttle
- 🔥 Exhaust outlet
- 🔥 Ash pan container
- 🔥 Adjustable feet 40 mm

#### SERIES **AQUASYSTEM 54x39** 9-13kW

#### SERIES **AQUASYSTEM 59x43** 10,5-14,5kW

#### SERIES **AQUASYSTEM 68x43** 14,1-18,1kW

#### SERIES **AQUASYSTEM 68x53** 13-17kW

#### SERIES **AQUASYSTEM 90x41** 18-22kW



ALAQ **54x39.S**

ALAQ **54x39.G**

ALAQ **59x43.S**

ALAQ **59x43.G**

ALAQ **68x43.S**

ALAQ **68x43.G**

ALAQ **68x53.S**

ALAQ **68x53.G**

ALAQ **90x41.S**

ALAQ **90x41.G**

CERAMIC  
GLASS



# CERAMIC GLASS DOUBLE GLASS SYSTEM



**Ceramic glass** used in fireplace inserts produced by our company is specially designed to improve combustion efficiency. Metallic layer covering the surface of the ceramic glass is responsible for reflecting infrared rays. Thermal energy, which is formed in the furnace, is not dissipated but is retained within and contributes significantly to the increase of thermal efficiency of the fireplace. All fireplaces can be ordered with fireplace glass in a version called **DECOR** (decorative glass). With the corner fireplace, there is also a possibility of ordering-glass door with a shared double glass or one curved (bent) glass version with DECOR or ordinary glass.



# GLASS TYPE GLASS PLATE



## CORNER FIREPLACE LEFT/RIGHT

- Standard connected glass ■
- Decor connected glass ■
- Decor bent glass ■
- Standard connected glass + interior bent ■
- Decor connected glass + interior bent ■
- Decor bent + interior bent ■



## STANDARD FIREPLACE

- Standard glass ■
- Decor glass ■
- Standard glass + interior standard ■
- Decor glass + interior standard ■

GLASS  
PLATE  
FOR FIREPLACES  
AND PELLET STOVES



ADDITIONAL  
OFFER



.05



# BIO TORCH



Bio torch is a very impressive decorative element, which can be an additional attraction of summer parties in the garden or on the patio. Ideal for gardens, hotels or grill huts. Also emits heat, creating a very nice aura around it. Bio torch burns odorless and environmentally friendly with biofuel. As the results of combustion process it gives water vapor and carbon dioxide. It is produced from high-quality stainless steel resistant to high temperatures.



Bio torch is available in three different sizes: Small, Medium and Standard.

BP-01SM  
SMALL



BP-01M  
MEDIUM



BP-01S  
STANDARD



# BIOFIREPLACE

---



Bio fireplace is an excellent alternative to the traditional fireplace. Easy to install and use. It has a classic design which makes it perfect for any interior.

Bio fireplace is an elegant way to take care of a warm atmosphere in any room. Ideally suited to apartments, offices, hotels and other places where we would like to enjoy the warmth of the flames, and where it is not possible for technical reasons to install a traditional fireplace.

Bio fireplace requires no power supply and no connection to the chimney. It does not produce smoke, ash, and does not emit harmful substances, which gives unlimited possibilities of arrangement.

In bio fireplace a solid fuel (wood briquettes) was replaced by liquid ecological biofuel, where combustion is odorless and safe, accompanied only by water vapor and comparable to the amount of exhaled by humans CO<sup>2</sup>.

We offer bio fireplace with a decorative housing made of stainless steel in three colors - black, red and grey.



# BIOTABLES



Bio tables produced by our company are a highly decorative element for every interior, which, due to the mild light source in each room create exceptional and romantic mood.

Distinguished by an original design and shape that can fit into any space: terraces, gardens, restaurants, hotels or spa. Have a safe , made from a ceramic glass shell -resistant to high temperatures. They are equipped with a bio container fuel of a capacity from 0.6 to 1.2 liters of bioethanol.

Bio tables Hitze are produced in three different styles: round - RULLO, tall and slim - IGNIS and simple rectangular - PIATTO. Each line of bio tables is available in three colors: white, black and red.

All the details of which we make our bio tables, are of the highest quality. The steel elements are produced of polished stainless steel. Bio tables are safe to use, do not require a chimney, do not emit smoke and soot.

SERIES PIATTO



SERIES IGNIS



SERIES RULLO



colors available



# CASSETTE **CUBO**

---



Cassette fireplace is a specially designed furnace, which can be installed in existing open fireplaces or in a newly constructed ones.

The use of cassettes in open fireplaces protects against fire and retreat of smoke into the room.

CUBO cassette is provided with two additional hot air outlets. This allows you to effectively use the heat from combustion to heat adjacent rooms. The combustion chamber insert is lined with material that accumulates heat, which raises the temperature and improves the combustion parameters.



CASSETTE **CUBO 700**



CASSETTE **CUBO 800**

# HEAT EXCHANGERS

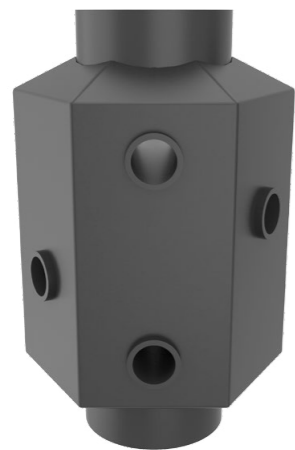
---



Heat exchanger is an additional cowl put at the fireplace, which task is to recover heat from the exhaust gases emanating from the fireplace to the chimney.

The heat recovered by water, which is located in the base of the exchanger is further transmitted to all receivers located inside of the building. The biggest advantage of this solution is the efficient utilization of energy, which is usually not used, and even wasted.

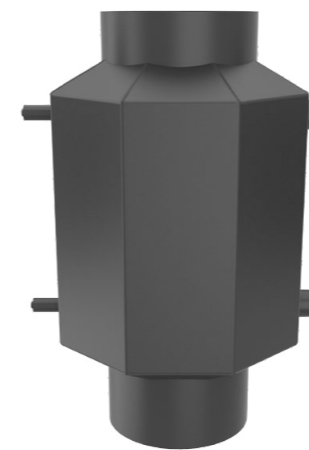
In addition, the heat exchangers of hot water do not require additional expenditure of fuel, making them more economically advantageous option. The use of heat exchangers is an excellent choice for owners of air fireplaces, who do not want to give up the existing solutions and see the possibility to use the additional energy to heat their home or water.



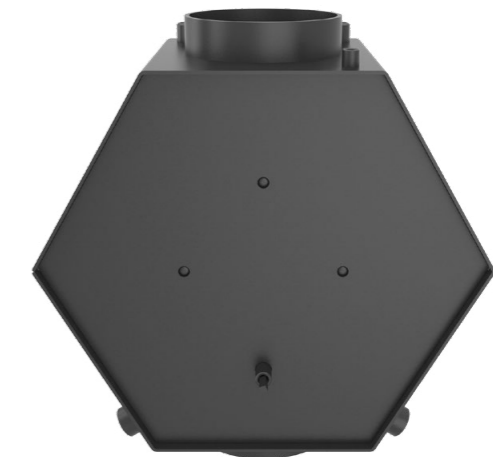
HEAT EXCHANGER  
AIR  
WCPP1.FI200



HEAT EXCHANGER  
WATER JACKET  
WCPW01.FI200



HEAT EXCHANGER  
WATER JACKET WITH COIL  
WCPW01W.FI200



HEAT EXCHANGER  
WATER JACKET WITH PIPES  
WCPW02.FI200

# FIREPLACE **FRAMES**



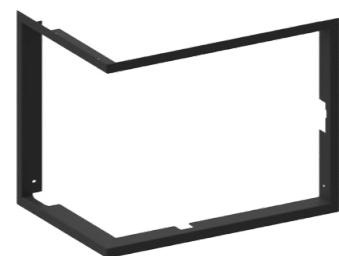
A frame covers the space between the casing of the fireplace and the door. It is made of steel with a thickness of 2 mm, powder-coated with heat-resistant paint. An additional advantage of fireplace frames is a simple method of assembly, which can be carried out independently. The frame is screwed to the housing using screws M5. Paint color matches the fireplace insert RAL color. Hitze frames are produced for each model of the fireplace in our offer.



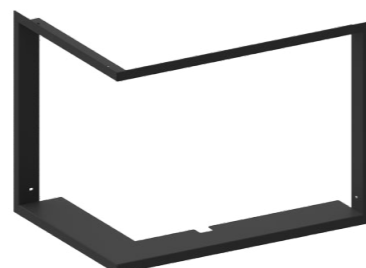
FAL.SH-M01



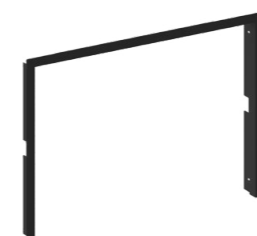
FAL.SV-M01



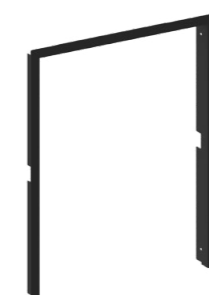
FAL.LH-M01



FAL.LGH-M01



FAL.SH-M02



FAL.SV-M02



FAL.LH-M02



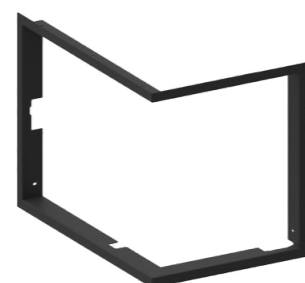
FAL.LGH-M02



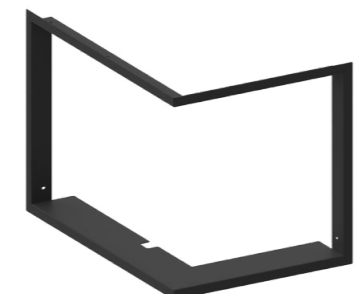
FAL.GH-M01



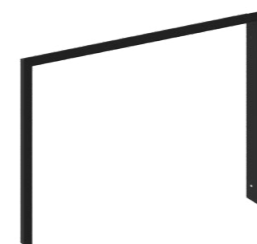
FAL.GV-M01



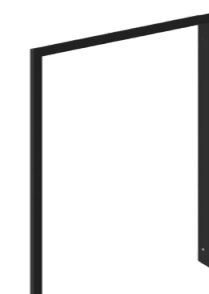
FAL.RH-M01



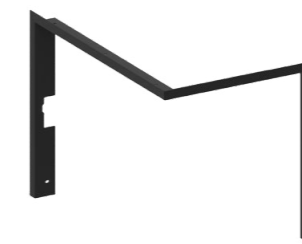
FAL.RGH-M01



FAL.GH-M02



FAL.GV-M02



FAL.RH-M02



FAL.RGH-M02

# OFFICIAL DISTRIBUTORS BENEFITS

---



We pay a great attention to a professional, fast and friendly service to our clients. We strive to provide for our partners with a smooth cooperation, relaxed atmosphere and of course mutual benefits as well as satisfaction.

- Discount policy
- Item Availability
- Quality of performance
- Brand



[www.hitze.company](http://www.hitze.company)

„Coming together is a **beginning**.  
Keeping together is **progress**.  
Working together is **success**. ”



HENRY FORD